

Manifold System (Automatic / Manual /Emergency)



Specifications:

HTM 2022/HTM 02-01 - Medical Gas Pipeline System

EN 737-3:1998 - Medical Gas Pipeline System

C11 – NHS Estates Model Engineering Specification

HTM 2020/2021 – Electrical Safety codes for High & Low Voltage System

Wired to the current IEE regulations & BS7971

Introduction

WTK manifold system has been designed and manufactured according to strictest international requirement. It has the superior performance in providing the necessary airflow and warning requirement to the hospital. Manifolds for medical gases are used where continuity of supply is essential and the supply system requires monitoring to the standards.

Description

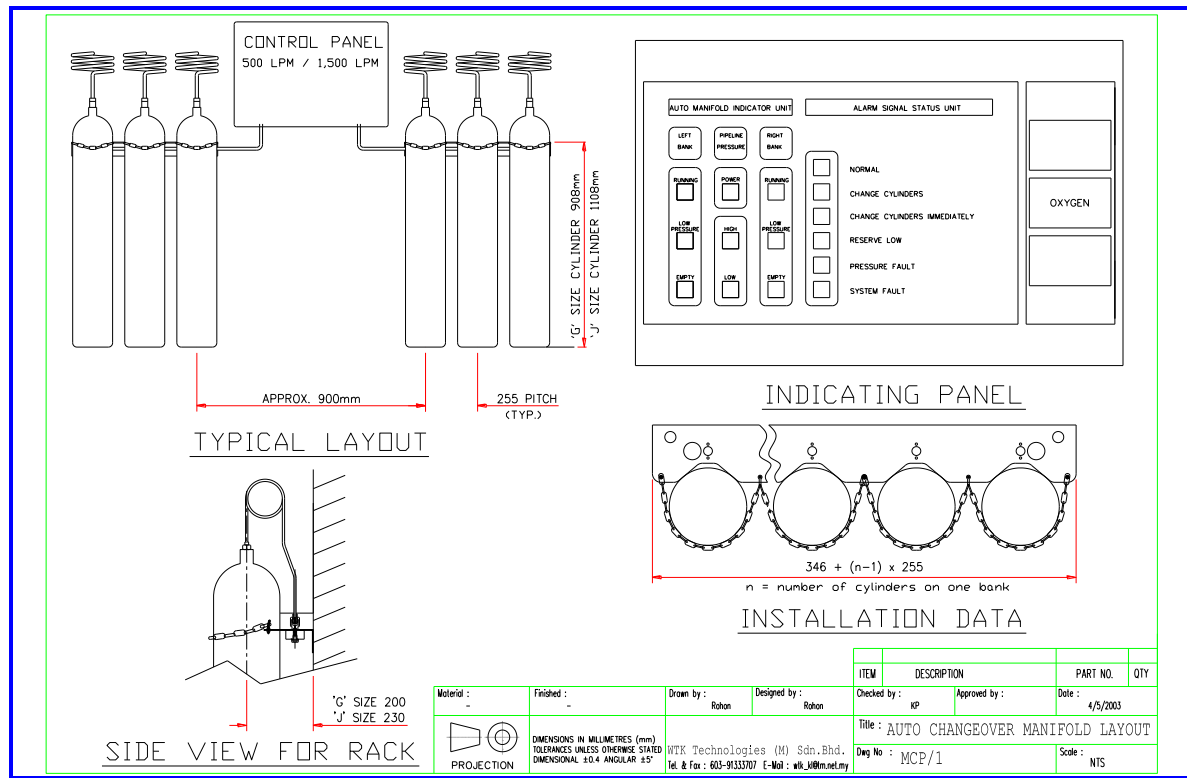
WTK Automatic Manifold consists of a central control panel flanked by two cylinder headers complete with cylinder tailpipes. Gas cylinders are attached to each side and the panel will select the first bank until inlet pressure falls below a pre-set figure when the panel will switch to the second bank and initiate an alarm signal.

Automatic Manifold is pneumatically controlled by the service gas and continues to function in the event of a failure of the electricity supply. The manifold panel is available to supply gas at either 400 kPa or 1000 kPa

The manifold has the following characteristics:

- ❖ Includes gauges monitoring both cylinder banks and outgoing pressure.
- ❖ All cylinder connections are gas-specific.
- ❖ Non-return valves are located in the manifold headers at each cylinder location.
- ❖ Panel includes manifold 'status monitoring' and 'status indicator'.
- ❖ Monitoring includes 'manifold to alarm system interface and indicator'
- ❖ Panel includes monitoring contents of remote emergency standby manifold.
- ❖ Includes pressure relief and isolation valve.

Typical Layout of Manifold Control Panel / Header



TECHNICAL SPECIFICATION:

Designation:	Autochangeover Manifold / Manual Manifold / Header / ESM
Dimensions	Varies
Material:	Brass Block, copper tail pipes & fitting, High grade steel
Finishing:	Epoxy Powder Coatings / Natural Finish
Electronics	PCB indicators with IP enclosure
Regulator Set	High quality regulators for 500/1000/1500 LPM
Power Rating	240VAC input, 50/60 Hz

Model Number & Part List:

WT19001-6	Control Panel – 500 LPM Automatic Changeover (O2, N2O, ENT, MA4, SA7, N2)
WT19007-12	Control Panel – 1,000/1,500 LPM Automatic Changeover (O2, N2O, ENT, MA4, SA7, N2)
WT19012-18	Control Panel – 500 LPM Manual Changeover (O2, N2O, ENT, MA4, SA7, N2)
WT19019-21	Control Panel – 1,000/1,500 LPM Manual Changeover (O2, N2O, ENT, MA4, SA7, N2)

TÜV Rheinland certified company for
 ISO 13485 & CE0197 Marking



WT19025/35/45/55/65/75	Manifold Header c/w Rack – Bullnose connection 2 x 1 (O2, N2O, ENT, MA4, SA7, N2)
WT19026/36/46/56/66/76	Manifold Header c/w Rack – Bullnose connection 2 x 2 (O2, N2O, ENT, MA4, SA7, N2)
WT19027/37/47/57/67/77	Manifold Header c/w Rack – Bullnose connection 2 x 3 (O2, N2O, ENT, MA4, SA7, N2)
WT19028/38/48/58/68/78	Manifold Header c/w Rack – Bullnose connection 2 x 4 (O2, N2O, ENT, MA4, SA7, N2)
WT19029/39/49/59/69/79	Manifold Header c/w Rack – Bullnose connection 2 x 5 (O2, N2O, ENT, MA4, SA7, N2)
WT19030/40/50/60/70/80	Manifold Header c/w Rack – Bullnose connection 2 x 6 (O2, N2O, ENT, MA4, SA7, N2)
WT19031/41/51/61/71/81	Manifold Header c/w Rack – Bullnose connection 2 x 8 (O2, N2O, ENT, MA4, SA7, N2)
WT19032/42/52/62/72/82	Manifold Header c/w Rack – Bullnose connection 2 x 10 (O2, N2O, ENT, MA4, SA7, N2)
WT19033/43/53/63/73/83	Manifold Header c/w Rack – Bullnose connection 2 x 12 (O2, N2O, ENT, MA4, SA7, N2)
WT19091/2/3/4/5	Emergency Supply Manifold 2 x 1, 2 x 2, 2 x 3, 2 x 4, 2 x 5
WT19101/2/3/4/5	Spare Rack 1 x 2, 1 x 3, 1 x 4, 1 x 5, 1 x 6
WT19110	Tools Holder
WT19120S-1000	Pressure Reducing Set, Simplex, 1000 LPM
WT19120S-3000	Pressure Reducing Set, Simplex, 3000 LPM
WT19120S-5000	Pressure Reducing Set, Simplex, 5000 LPM
WT19120D-1000	Pressure Reducing Set, Duplex, 1000 LPM
WT19120D-3000	Pressure Reducing Set, Duplex, 3000 LPM
WT19120D-5000	Pressure Reducing Set, Duplex, 5000 LPM
WT19130	VIE Control Panel



Autochangeover panel with heater



Manual Manifold with heater



Pressure Reducing Set (Duplex)

TÜV Rheinland certified company for ISO 13485 & CE0197 Marking

