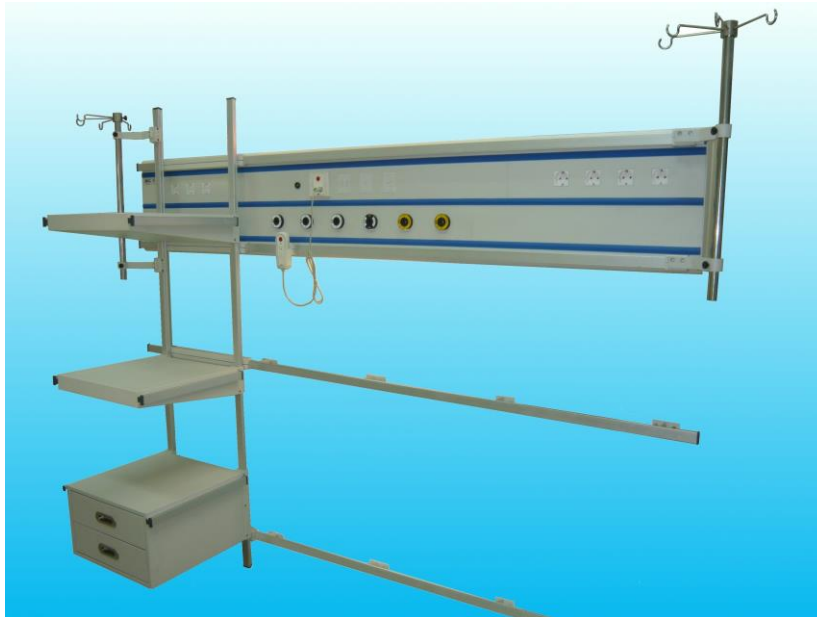


Resuscitation, High Dependency & ICU Bed Head Service Unit



Specifications:

- HTM 2022:1997/HTM02-01 – Medical Gas Pipeline system
- HTM 2020 – Electrical Safety Low Voltage System
- BS EN ISO 11197:2009 – Medical Supply Unit
- BS EN 60601-1:2007 Medical Electrical Equipment
- HTM 2015 – Bed head Services
- C11 – NHS Estates Model Engineering Specification
- EN737-3: 1998 – Medical Gas Pipeline System

Introduction

WTK Resuscitation, High Dependency & ICU Bed Head Service Unit is designed to provide nursing services, with the capability to mount medical gas pipeline, electrical services (LV & ELV), data communication & lighting system for many hospital areas. It has a compact design, which complies fully with the international codes and standards.

It has definite advantage by reducing the cost as compared to ceiling mounted equipment such as pendants and also having lesser structural load, when the structural is a problem for areas such as top floor or weak or old building renovation work. It has the dry & wet section all wall mounted and there are horizontal rails where the wet & dry side could be swapped over without major relocation work. It has the unique moveable rail system and multiple tray design.

Description

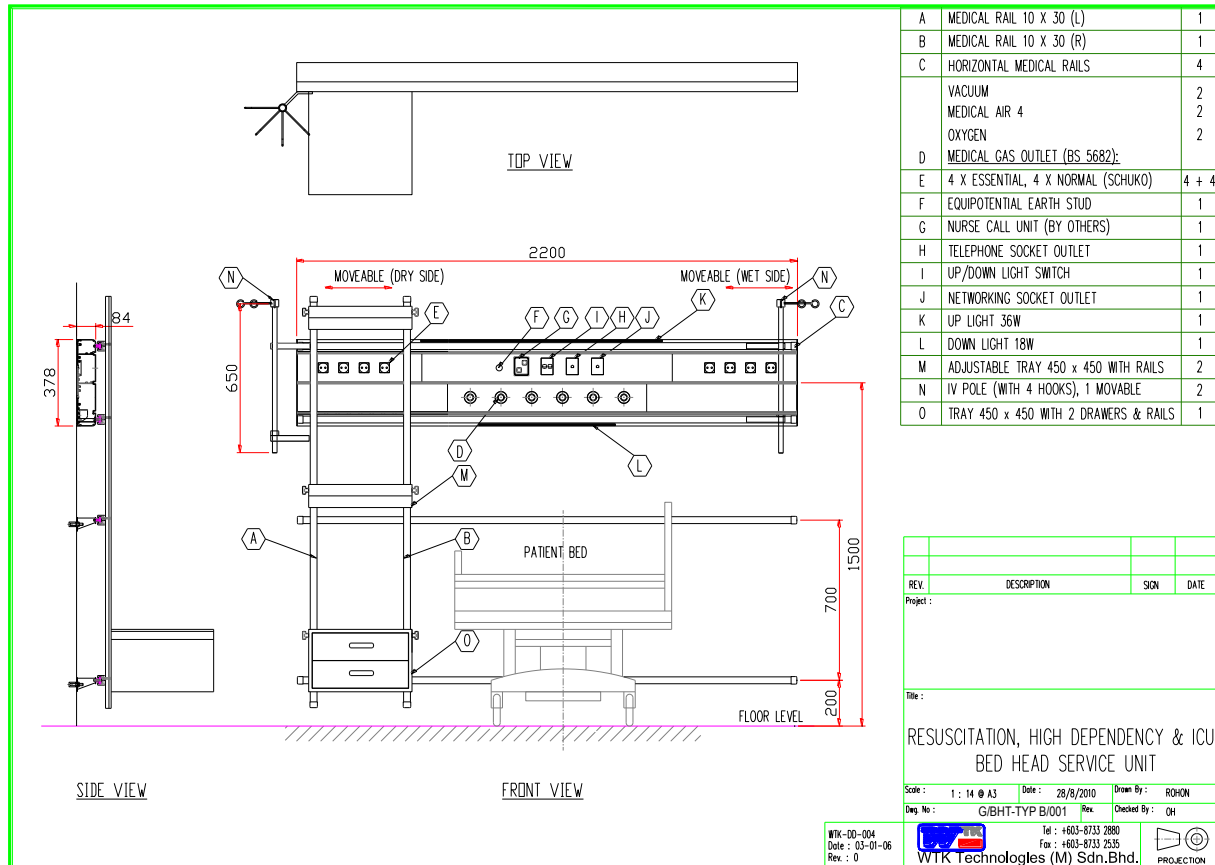
All the front panels can be opened from the front to ease the maintenance work. The panels are also able to suit all the special requirements on free issue items.

It is using double layer bed head 380mm series with 4 x horizontal rails, 2 mounted on bed head while the other 2 mounted on wall. The 2 vertical rails are mounted onto the horizontal rails and able to slide to any position required, while it also able to mount equipment such as tray, drawers unit, IV poles etc. The multiple rails system is also able to mount all other rail accessories which will be convenient for nursing staff.

All the equipment will be off the floor hence providing the most hygienic and minimize blockage on access. No more IV stands, monitor trolley & shelves/drawers required to be brought into the working space hence eliminate the inconveniences.

Excellence in Medical Engineering

Typical Layout



*** Off the Floor Design, Replace heavy & costly ceiling pendant system, flexibility and friendly to use**

TECHNICAL SPECIFICATION:

Designation	WT02100 Resuscitation, High Dependency & ICU Bed Head Unit
Dimensions	2,200mm L x 1,800mm H x 600mm D with 380 series Bed Head Unit - 380mm H x 80mm D
Material	Aluminium extrusion, Stainless Steel & Electro-galvanized sheet
Dry Side	Single, Double or Triple height adjustable trays, drawers unit, IV poles
Wet Side	IV poles
Electrical	Excess of 20 electrical & data sockets, nurse call provision, EPJ
Lighting	1 x 36W for room Light & 1 x 18W for reading light
Medical Gas Outlets	6-12 medical gas outlets
Finishing	Epoxy powder coating

Model Number:

WT02100	Resuscitation, High Dependency & ICU Bed Head Unit
Refer to Horizontal Bed Head for all the accessories	

TÜV Rheinland certified company for ISO 13485 & CE0197 Marking

